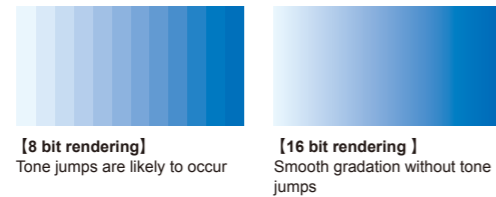


New generation output software with 16 bit rendering (bundled item)



High performance RIP software designed to fully enable all advanced features of JV5 series printer



16 bit rendering eliminates tone jumps and produces fine color reproduction. Different images can be freely nested on the RIP. The web update function has been newly added to RasterLink Pro5 to easily achieve both software update and profile download.

RasterLink Pro5 SG

■Specification

Items		Specification
JV5-320S		
Print Head		On-Demand Piezo Heads (Array of 4 staggered print heads)
Maximum printing width		3,290 mm (129")
Printing resolution		540, 720, 1440 dpi
Printing mode (Scan × Feed)		720 × 540 dpi: Bi-/Uni-direction 540 × 900 dpi: Bi-/Uni-direction 540 or 720 × 720 dpi: Bi-/Uni-direction 540 or 720 × 1080 dpi: Bi-/Uni-direction 720 × 1440 dpi: Bi-/Uni-direction 1440 × 1440 dpi: Bi-/Uni-direction
Ink	Kind	Exclusive solvent ink: Eco-HS1 ink, HS ink, SS21 ink, ES3 ink Exclusive dye sublimation ink: Sb52 ink
	Supply	Automatic change of double ink cartridges
	Capacity	6 color mode: 440 ml cartridge × 2/color, 880 ml / color 4 color mode: 440 ml cartridge × 4/color, 1,760 ml /color
Media specification	Size	Max. width: 3,300 mm (129.9") Min. width: 297 mm (11.6")
	Thickness	1.0 mm or below
	Roll weight	130 kg (286.6 lbs) or below
	Printing surface	Face out / face in
	Roll diameter	Inside: 3 inch / Outside: Less than φ 250 mm (9.8")
Media cutting		Cutting in Y direction by cutter at the head
Media heater		3 way intelligent heater (PRE / PRINT / POST)
Media take-up device		Automatic take-up device, Inside / outside selectable 3 inch paper bobbin; Outer diameter 300 mm or less
Nozzle checking unit (NCU)		Laser system (Class 1 or below)
Print gap		1.5 mm to 7 mm, step-less & user setting (Automatic detection of media thickness)
Distance accuracy	Absolute accuracy	± 0.3 mm or ± 0.3 % of designated distance, whichever is greater
	Reproducibility	± 0.2mm or ± 0.1 % of designated distance, whichever is greater (with Media designated by us)
Interface		USB 2.0
Power specification		AC 200 V to 240 V ± 10 %, 50 / 60 Hz ± 1 Hz, 30 A or below
Power consumption		7,200 VA or below
Operational environment		Usable temperature: 20 °C to 35 °C, Humidity: 35 to 60 %Rh (No condensing)
Outer dimension (W) × (D) × (H)		5,170 × 1,610 × 1,640 mm or below
Weight		1,200 kg (2,646 lbs.) or below

■Option and supply

Item	Item No.
Eco-HS1 ink	440 ml SPC-0538 Y/M/C/K/Lm/Lc/Lk 2 liters* SPC-0587 Y/M/C/K/Lm/Lc/Lk
HS ink	440 ml SPC-0473 Y/M/C/K/Lm/Lc 2 liters* SPC-0589 Y/M/C/K
SS21 ink	440 ml SPC-0501 Y/M/C/K/Lm/Lc 2 liters* SPC-0588 Y/M/C/K/Lm/Lc
ES3 Eco solvent ink	440 ml SPC-0440 Y/M/C/K/Lm/Lc
Sb52 Dye sublimation ink**	440 ml SPC-0584 Nk/K/Rk/BI/M/Y/Lbl/Lm 2 liters* SPC-0585 Nk/K/Rk/BI/M/Y/Lbl/Lm
MBIS (Mimaki Bulk Ink System)	OPT-J0211
Solvent wiper kit	10 pcs SPA-0125
Waste ink bottle 4L	1 pc SPA-0128
Cutter blade assembly	1 pc SPA-0126
Cleaning solution MS2/ES3/HS kit200	1 pc SPC-0369
MS cleaning cartridge	220 ml SPC-0294
Mesh print unit	1 pc OPT-J0142
Lamp unit for double sided print	1 pc OPT-J0147

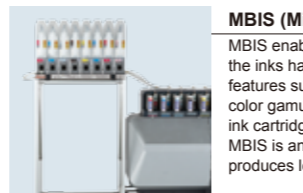
* 2 liter ink packs can be used with the bulk ink system.
** Sb52 ink has three types of black ink: Normal black (NK), Deep black (K) and Reddish black (RK).



HS ink
A solvent ink meeting the needs for high scratch resistance and high-speed high density printing required for outdoor signboard printing.



ES3 ink
A safe and low odor solvent ink usable that can be used even in general offices without special exhausting facilities.



MBIS (Mimaki Bulk Ink System)
MBIS enables a saving in ink costs and the inks have the same high quality features such as ink emission, stability, color gamut and reliability as Mimaki's ink cartridge system. MBIS is an eco-friendly ink system that produces less waste.



Maximum printing width
3,290 mm
JV5-320S

●Some of the samples in this catalogue are artificial renderings. ●Specifications, design and dimensions stated in this catalogue may be subject to change without notice (for technical improvements, etc). ●The corporate names and merchandise names written on this catalogue are the trademark or registered trademark of the respective corporations. ●Inkjet printers print using extremely fine dots, so colors may vary slightly after replacement of the printing heads. Also note that if using multiple printer units, colors could vary slightly from one unit to other unit due to slight individual differences.



Our factory is certified according to ISO14001:2004

MIMAKI ENGINEERING CO., LTD.
2182-3 Shigeno-otsu, Tomi-city, Nagano 389-0512, Japan
Tel: +81-268-78-2288
trading@mimaki.jp www.mimaki.co.jp

MIMAKI USA, INC.
150 Satellite Boulevard, suite A, Suwanee, Georgia 30024, U.S.A.
Atlanta +1-888-530-3988 Boston +1-888-530-3986
Los Angeles +1-888-530-3987 Chicago +1-888-530-3985
www.mimakiusa.com

MIMAKI EUROPE B.V.
Stammerdijk 7E,
1112 AA Diemen, The Netherlands
Tel: +31-20-4627-640
www.mimakieurope.com

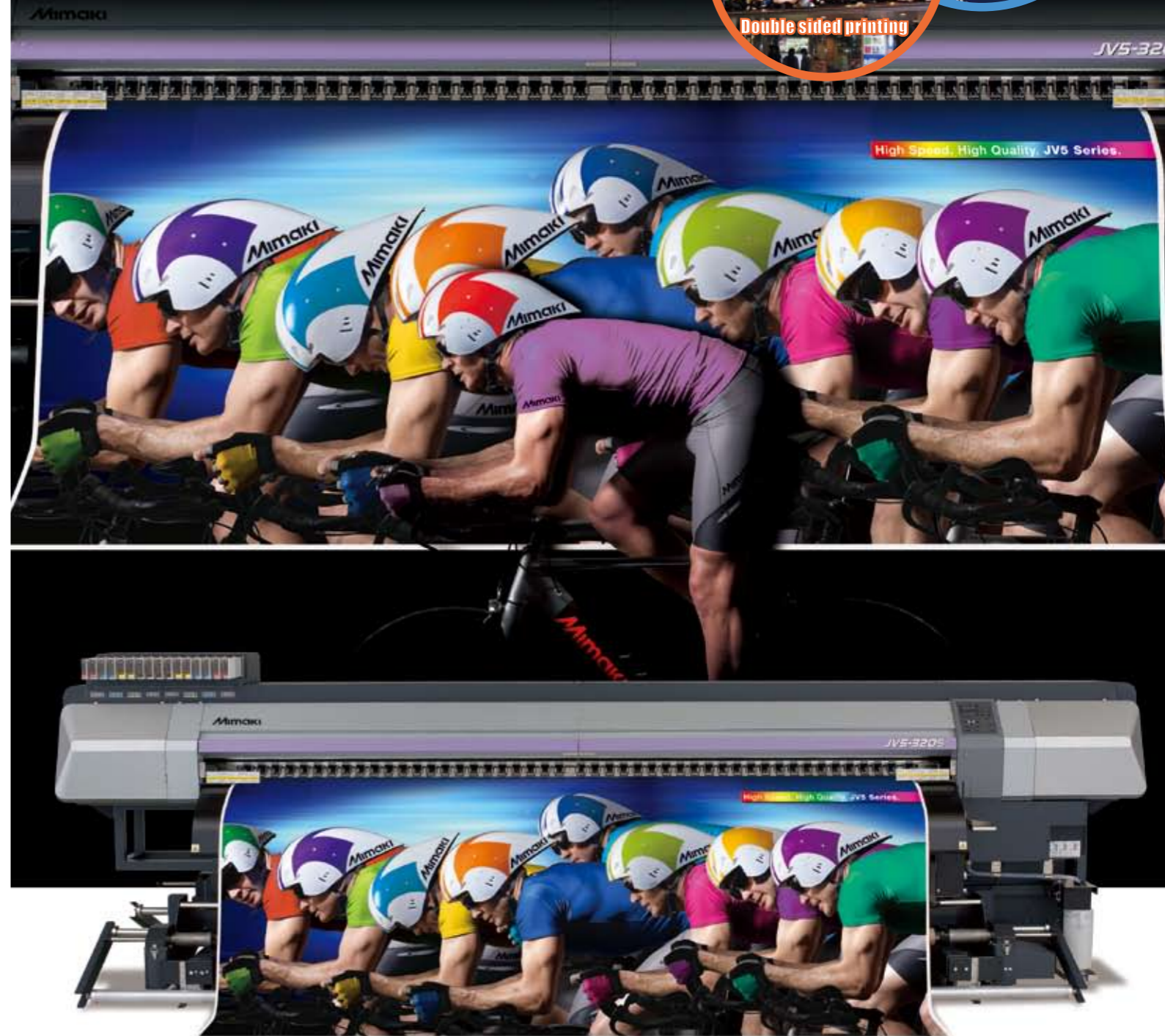
printed in Japan DB102780-03

Grand format inkjet printer
JV5-320S



High image quality uncompromised
by super wide format
Long awaited printer has arrived

New functions
Expand
business horizons



Versatile super wide printer - 3.29 m (129 inches)

Maximum resolution - 1440 dpi

Continuous uninterrupted printing with UISS



Automatic drainage system to remove excess ink

Mesh printing innovation

An ink tray receives excess ink which passes through a mesh so avoiding the requirement for a liner. Ink in the tray is automatically raked out to enable longer printing without worrying about ink overflow (option)



Mesh materials
High quality print is achieved without staining from excess ink.



Device to remove excess ink
Excess ink in the mesh tray is periodically raked into a waste ink bottle.

New function for eye catching backlit applications

Double sided printing innovation

By printing on both sides of FF (flexible face), images for viewing both at night and in daylight can be enhanced to show the same greater brilliance.



Automatic registration of double sided prints

When printing on the reverse side, a sensor detects marks printed on the front side and automatically compensates for shrinkage caused by solvent. In addition the printing position in the head movement direction can be changed manually during printing so that the relative positions of double sided images can be adjusted.



Continual innovation. JV5-320S incorporates new features for a variety of high quality applications. JV5-320S overturns previously held conceptions about many large format printers.

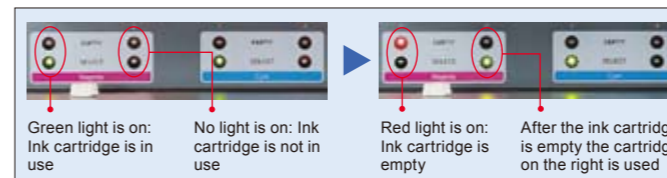
The super wide printing width of 3.29 m (129 inches) and the highest resolution of 720 x 1440dpi enable printing of large, high quality, close view signage. Additionally, both double sided and mesh prints are now supported. Many new leading-edge features such as secure media feeding of both heavy and light-weight rolls, unlock new business opportunities.



Mega-sized, high quality printing. Cutting edge technologies to take advantage of JV5-320S to the fullest extent.

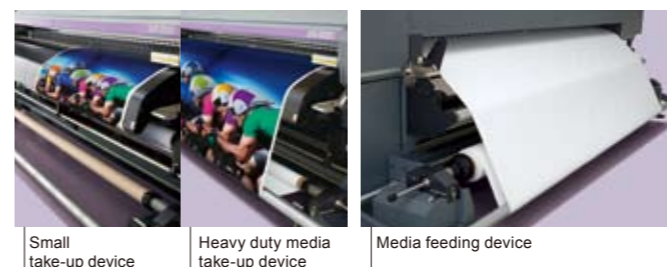
UISS (Uninterrupted Ink Supply System)

JV5 can utilize four cartridges per color in 4-color mode. When the ink cartridge runs out, another cartridge automatically begins to supply ink to prevent interruption of printing. A maximum of 1,760 ml ink per color can be loaded at one time. Ink cartridges can be replaced during printing and overnight continuous printing is possible.

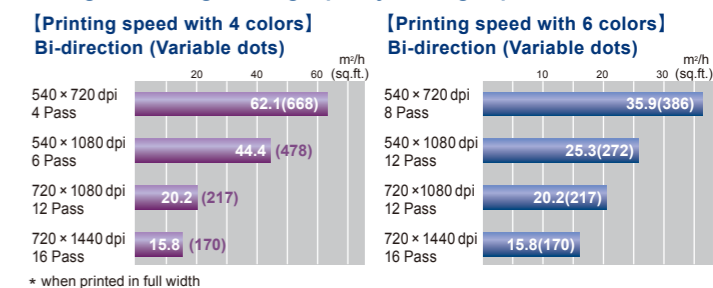


JV5 is equipped with both a heavy duty media feeding system and a convenient small take-up device

Media feeding and take-up devices securely feed heavy media up to 3,290 mm (129") wide and 130 kg (290 lbs.) in weight with a tension bar to maintain constant media tension. A small take-up device which can adjust take-up tension is included. Both heavy and narrow media can be used with ease.



Mega-size images at high quality and high speed



4 staggered heads arrangement

4 of the newly developed high speed heads configured in 4 staggered lines enable high speed printing. Print resolutions up to 1440 dpi can be selected to suit customer requirements.



3 stage intelligent heater

A3 stage intelligent heater enhances both color development and ink fixing by automatically heating the media.

Automatic nozzle checking

The status of ink-discharge from the printing head and any nozzle clogging is quickly detected and cleaned to reduce waste of both media and ink.

Media feed compensation

The media is transported evenly without being affected by the varying weight of the roll media. This eliminates any banding caused by irregular feeding of the media so maintaining the highest print quality.

Head height adjustment

The thickness of the media is auto-sensed to enable the height of the head to be adjusted automatically for the correct head gap. Even when the thickness of the media is changed, printing is resumed with a constant head gap to always obtain the best printing result.

USB 2.0 interface

USB 2.0 interface enables high speed data transmission.