

Color Management System

MPM3
Mimaki Profile Master

Expand creativity

Excellent color reproducibility

Advanced color management that ensures the desired color results

1 Advanced device-profile creation
Upgraded color representation

Simple profile-creation steps!

Creating optimal device profiles that match various types of media and inks by following the wizard.*1

Custom device profiles maximize the performances of printers and inks. In addition to device (output)-profiles, input profile creation is also available. This feature delivers the results that best match clients' needs by creating optimal profiles.

Excellent color reproducibility allows for the creation of attractive prints

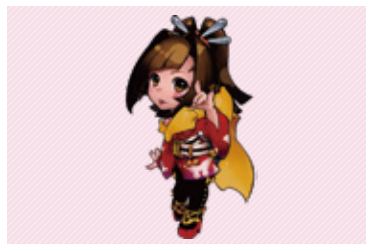
Creation of a device profile that accommodates "Mimaki Expand Color," a new input profile of RasterLink6Plus /RasterLink7, is possible. "Mimaki Expand Color" can reproduce more vibrant solid colors and brighter skin tones than a conventional input profile and provide more attractive print results with high-contrast color shades.

*1 Device profile : An output profile for RasterLink series, Mimaki original RIP software

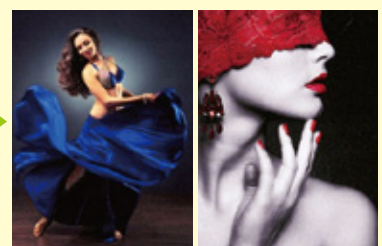
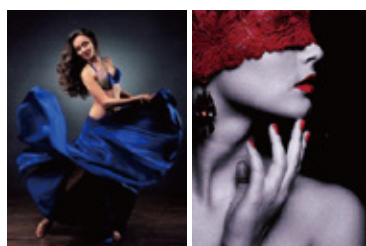
Effectiveness of "Mimaki Expand Color"
A new input profile of RasterLink

Conventional input profile

Mimaki Expand Color



Brighter pastel / pale colors

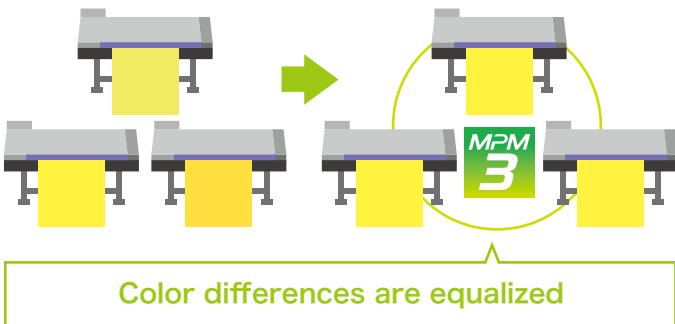


Bright places are brighter and dark places are expressed darker.
High-contrast color shades make the print more impressive.

2 Accurate color matching among multiple printers

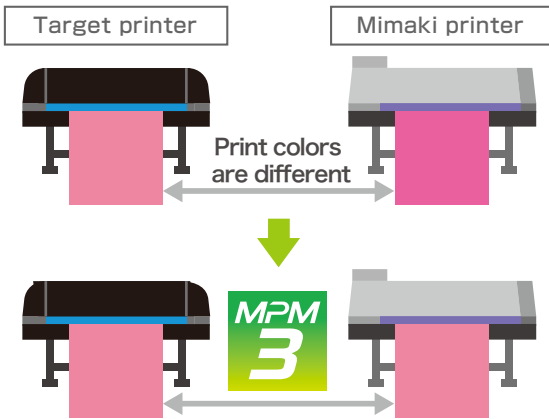
Equalization:
 Matching colors among the same printer models.

This function equalizes the color differences among prints that are printed from multiple printers. Color differences among multiple printers are simply equalized by measuring color charts. This capability allows the same image to be simultaneously printed using multiple printers, thereby enabling large-lot orders to be completed in a short time or undertaking of urgent orders.



Emulation: Reproducing colors that are equivalent to those printed by other manufacturers' printer models.

The new emulation capability reproduces colors that are equivalent to those produced by different printer models, including ones from other manufacturers, by measuring color charts using a colorimeter. This capability eliminates color-matching issues that occur when replacing or adding printers.



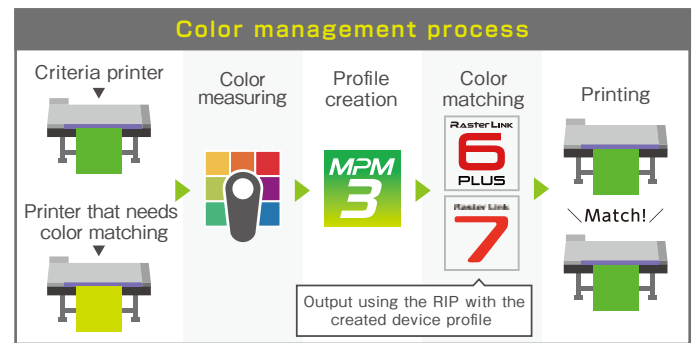
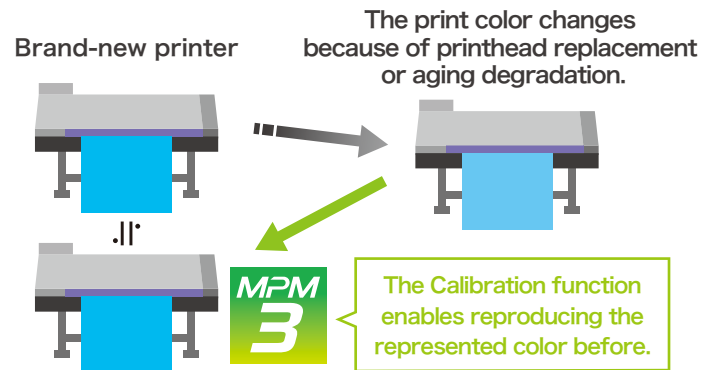
3 Calibration: Maintaining print color of a single printer

After printer maintenance, in particular, after printhead replacement, print colors may differ from the specified ones. Color differences are calculated after measuring color charts using a colorimeter. Since the differences are described as numerical values, anyone without expert knowledge can recognize and correct color differences.*2



Color measurement with a colorimeter

*2:Delta E (ΔE) values are used for describing color difference.



OS	OS Windows8, Windows8.1, Windows10
CPU	Intel Core2Duo 1.8 GHz or higher
Memory	1 GB or higher
HDD	30 GB or higher
Interface	USB 2.0, Ethernet
Compatible colorimeter	X-Rite: i1Pro2, i1i02, i1Pro3, i1Pro3 Plus, i1i03 Barbieri: Spectro LFP
Compatible Mimaki printer model	Printers that have USB 2.0 or Ethernet port
Language	English/Japanese

MPM3

Item	Item code	Remark
MPM3	SPM-007	Color management software
MPM3 / Colorimeter set	MPM3+i1	Color management software + Colorimeter

●Some of samples in this catalog are artificial renderings. ●Specifications, design and dimensions stated in this catalog may be subject to change without notice for technical improvements etc. ●The corporate names and merchandise names written in this catalog are the trademark or registered trademark of the respective corporations. ●The specifications described in this catalog are as of July 2022.

Mimaki MIMAKI ENGINEERING CO., LTD.
 mimaki.com 2182-3 Shigeno-Otsu, Tomi-city, Nagano 389-0512, Japan
 TEL: +81-268-64-2281

Mimaki Global Network

USA	MIMAKI USA, INC.	Europe	MIMAKI EUROPE B.V.
Brazil	MIMAKI BRASIL COMERCIO E IMPORTACAO LTDA	Indonesia	PT. MIMAKI INDONESIA
India	MIMAKI INDIA PRIVATE LIMITED	Australia	MIMAKI AUSTRALIA PTY. LTD.
Taiwan	MIMAKI ENGINEERING (TAIWAN) CO.,LTD.	China	SHANGHAI MIMAKI TRADING CO.,LTD.
Singapore	MIMAKI SINGAPORE PTE. LTD.	Thailand	MIMAKI (THAILAND) CO.,LTD.